



WORLD'S BEST  
ALLOY BULLBARS

East Coast Bullbars (ECB Pty Ltd)

Tel: 07 3897 5700

Fax: 07 3283 1168

ecb@ecb.com.au www.ecb.com.au

29 Snook St  
Clontarf QLD 4019  
Australia

Po Box 122  
Margate QLD 4019  
Australia

**BS80SY**

REPLACES: 25.03.14

REVISED: 19.09.14

## FITTING INSTRUCTIONS

### SUBARU XV 11-12 on BIG TUBE BAR VEHICLE FRONTAL PROTECTION SYSTEM (VFPS) FOR AIR BAG & ADR COMPLIANT VEHICLES

Check installation hardware before commencing.

Special tools: Air ratchet and associated sockets.

NOTE: The fitment of this bulbar to the vehicle leaves few accessibility gaps for access to bolts. Use of stands or multiple persons for fitment is recommended.

1. Lift bonnet.
2. From between headlights to rear of grille, remove six push pull plastic clips. **See figure 1.** Under vehicle remove two push pull plastic clips from centre of bumper and three push pull plastic clips from bottom of inner guard (per side). Disconnect fog lights from rear of bulb. Where bumper cover meets guard on wheel arch, remove one centre push plastic clip (per side). Carefully pull side of bumper out to unclip and forward to remove from vehicle.
3. Remove bumper infill (polystyrene).
4. Remove bumper support from front of chassis rails, four 12mm head bolts (per side).
5. Install ECB tow bracket onto drivers side chassis rail, just behind join point for bumper support, using two M12 x 35 bolts, flat washers, spring washers and nuts for top and bottom bolts, and one M8 x 35 bolt, spring washer and large flat washer for centre captive nut. **See figure 2.**
6. On rear of bumper support, drill four holes to 10mm. **See figure 3.**
7. Install ECB mounting brackets to rear of bumper support using three M10 x 35 bolts and washers on wire, flat washers, spring washers and nuts. Align outer section of mount to holes in chassis section of bumper support. **TIGHTEN ALL BOLTS. See figure 4.**
8. Using ECB mounts as a guide, drill remaining 2 holes (per side) to 10mm. **See figure 5. Blow filings clear and treat all exposed metal with a rust inhibitor.** Install two M10 x 35 bolts and flat washers on wire, flat washers, spring washers and nuts. **TIGHTEN ALL BOLTS.** Trim wire from bolts on entry to bumper support and crimp to rear of bumper support to avoid rattling.
9. Refit bumper support to vehicle using M8 x 35 bolts, spring washers and flat washers. **TIGHTEN ALL BOLTS.** Install M8 nuts to rear of bolts on top and outer rear bolts to stop M8 bolts from rattling loose (three per side). **Tighten all bolts. See figure 6 and 7.**
10. Disconnect indicator and parking lights on vehicle. Install ECB quick click wiring harnesses (supplied) between disconnected harness and indicator / park lights on vehicle. Run wiring out from under lights ensuring clearance from sharp edges and moving parts.
11. Splice ECB fog light wiring harness into fog light harness on vehicle using cable locks supplied. Ensure harness is clear of sharp edges and moving parts.



**WORLD'S BEST  
ALLOY BULLBARS**

**East Coast Bullbars (ECB Pty Ltd)**

Tel: 07 3897 5700

Fax: 07 3283 1168

ecb@ecb.com.au www.ecb.com.au

29 Snook St  
Clontarf QLD 4019  
Australia

Po Box 122  
Margate QLD 4019  
Australia

12. From rear of bumper cover, remove fog lights. This allows access for light wiring to exit vehicle.
13. Refit bumper cover as per reverse of steps 2 and 3.
14. Fit ECB LED indicator / park lights into protection bar as per instructions supplied with the LED indicator kit. **NOTE: Ensure park light is to outside. See figure 8.**
15. Attach ECB fog lights to protection bar. Place M6 x 20 bolts, spring washers (supplied) through light mount from inside and attach nut to top. Slide assembly into light mount in Protection bar and centralize light to hole. **TIGHTEN FIRM ONLY. See figure 9.**
16. Attach 6mm clip lock trim (supplied) to top of ECB protection bar. **NOTE:** Trim off lower edge on an angle so trim will sit flush with end of protection bar. **See figures 10, 11 and 12.**
17. Ensure vents are removed from ECB protection bar.
18. Install ECB protection bar to inside of ECB mounts using four M10 x 35 bolts, flat washers, spring washers and nuts. Bolts are accessible from vents and nuts from fog light opening. **FINGER TIGHTEN ONLY.**
19. Align ECB protection bar to vehicle. **See figure 13 and 14. TIGHTEN ALL BOLTS.**
20. Connect and fit fog lights to protection bar. Connect indicator lights.
21. Check indicator / park lights and fog lights for correct operation.
22. Install vents into ECB protection bar. Top vent to be installed with ECB logo to bottom, lower vents installed with ECB logo to top, to allow air to be directed to vent in bumper cover.

#### **ENSURE NUMBER PLATE IS CLEARLY VISABLE**

**Note:** When fitting/refitting the licence plate to the vehicle, ensure there is no obstruction to licence plate vision in accordance with local authorities. If required relocate licence plate to an alternate location.

#### **Further VFPS Notes:**

- a) Do not attach VFPS to the vehicle using anchorages not intended for this purpose (e.g. engine mounting bolts).
- b) Do not use this product for any vehicle make or model, other than those specified by the VFPS manufacturer.
- c) Do not remove the plaque or label from the VFPS.
- d) Do not modify the structure of the VFPS in any way.
- e) No accessory or fitment should project forward of the VFPS forward profile.
- f) **ENSURE THESE INSTRUCTIONS ARE LEFT WITH VEHICLE OWNER AND/OR OPERATOR.**

#### **IMPORTANT INFORMATION**

Periodically check bolts and nuts for correct tightness, especially if travelling on rough roads



East Coast Bullbars (ECB Pty Ltd)

Tel: 07 3897 5700

Fax: 07 3283 1168

ecb@ecb.com.au www.ecb.com.au

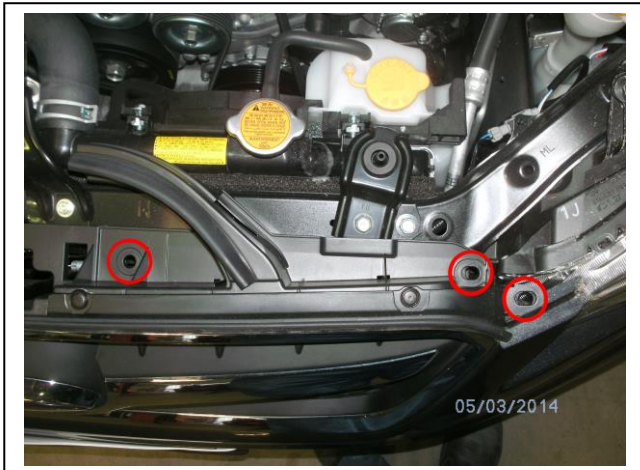
WORLD'S BEST  
ALLOY BULLBARS

29 Snook St  
Clontarf QLD 4019  
Australia

Po Box 122  
Margate QLD 4019  
Australia

**FITTING KIT**

1 – Pair ECB steel mounts	8 – M8 flat washers
1 – ECB tow bracket	9 – M8 spring washer
2 – M12 x 1.75 x 35 bolts	8 – M8 nuts
4 – M12 flat washers	2 – M6 x 20 bolts
2 – M12 spring washers	2 – M6 spring washers
2 – M12 x 1.75 nuts	2 – M6 nuts
10 – M10 x 1.5 x 35 bolt and washer on 300mm wire	1 – ECB LED Indicator / Park light kit
8 – M10 x 1.5 x 35 bolts	1 – Pair ECB Quick Click Indi / Park kit (IC13SUXVINDH)
26 – M10 flat washers	1 – ECB fog light kit (35 watt)
18 – M10 spring washers	4 – cable locks
18 – M10 x 1.5 nuts	2 – Fog light trims
9 – M8 x 35 bolts	1 – 2400mm length 6mm clip lock trim
1 – 5/16 x 1 ¼ flat washer	



**Figure 1:** Placement of clips to be removed on top of grille, between headlights.



**Figure 2:** Enlarge two holes in rear of bumper support to 10mm.



**Figure 3:** Install ECB tow bracket to drivers side of chassis. Top bolt is accessible when bumper support removed.



**Figure 4:** Install ECB mount to rear of bumper support using two M10 x 35 bolts on wire.



East Coast Bullbars (ECB Pty Ltd)

Tel: 07 3897 5700

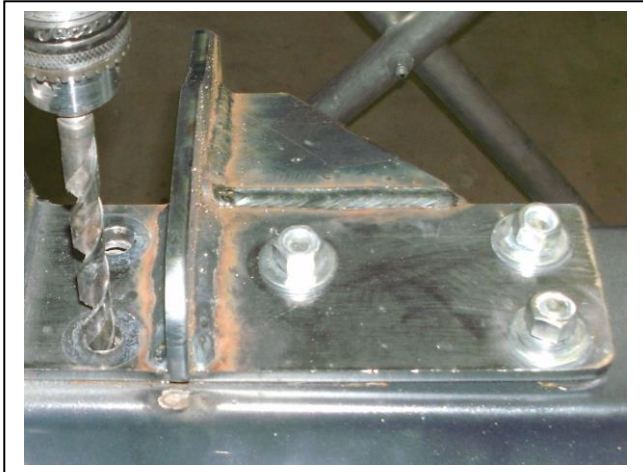
Fax: 07 3283 1168

ecb@ecb.com.au www.ecb.com.au

WORLD'S BEST  
ALLOY BULLBARS

29 Snook St  
Clontarf QLD 4019  
Australia

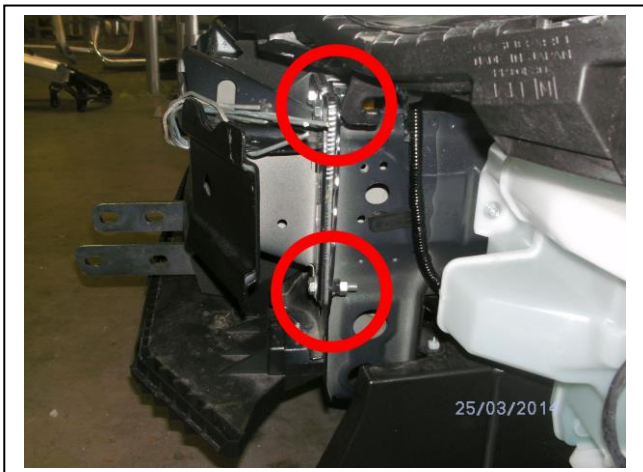
Po Box 122  
Margate QLD 4019  
Australia



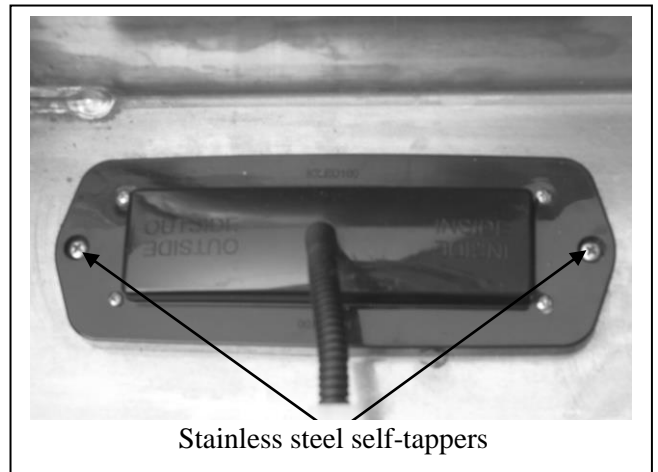
**Figure 5:** Using ECB mount as a guide, drill remaining holes to 10mm.



**Figure 6:** Mounts fitted to vehicle.

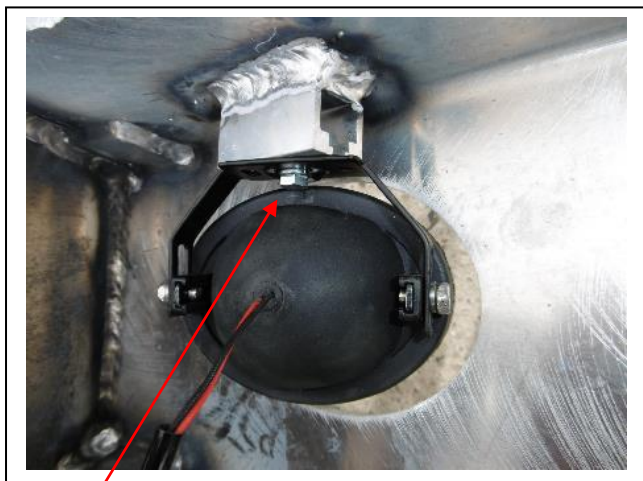


**Figure 7:** Install M8 nuts to rear of bolts too chassis rails. Tighten bolts before tightening nuts.



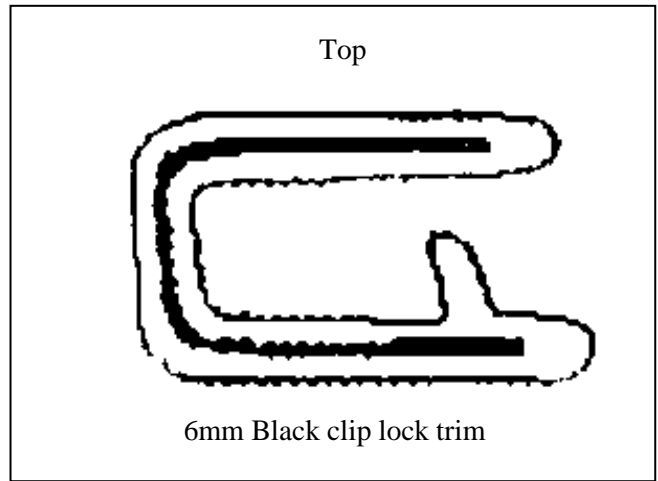
Stainless steel self-tappers

**Figure 8**



M6 Bolt

**Figure 9**



Top

6mm Black clip lock trim

**Figure 10**



**WORLD'S BEST  
ALLOY BULLBARS**

**East Coast Bullbars (ECB Pty Ltd)**

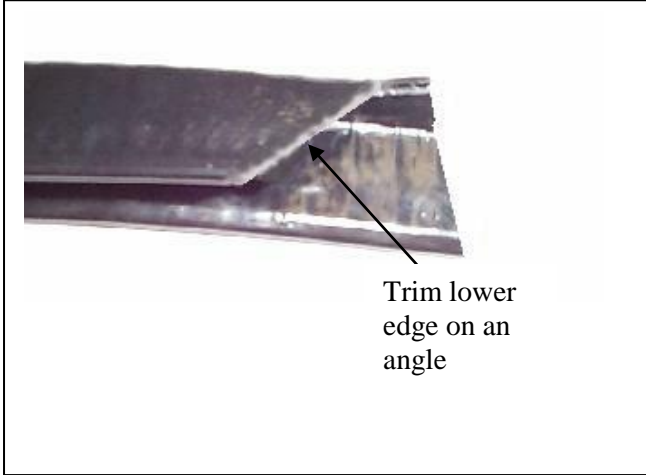
Tel: 07 3897 5700

Fax: 07 3283 1168

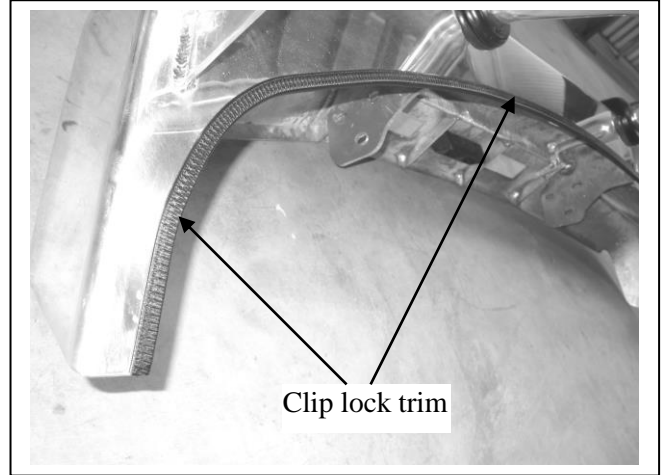
ecb@ecb.com.au www.ecb.com.au

29 Snook St  
Clontarf QLD 4019  
Australia

Po Box 122  
Margate QLD 4019  
Australia



**Figure 11**



**Figure 12**



**Figure 13: Front view**



**Figure 14: Side view**



**WORLD'S BEST  
ALLOY BULLBARS**

**East Coast Bullbars (ECB Pty Ltd)**

Tel: 07 3897 5700

Fax: 07 3283 1168

ecb@ecb.com.au www.ecb.com.au

29 Snook St  
Clontarf QLD 4019  
Australia

Po Box 122  
Margate QLD 4019  
Australia

## *We value your comments*

Dear Fitter,

ECB would like to know how you went with the installation of this product. We value your comment and may need to contact you to clarify some details so please complete your contact details clearly.

We would appreciate if you could complete as many of the following details as possible.

<b>Your Name:</b>	<b>Your contact No.</b>
<b>Product Part No.</b>	<b>Product Invoice No.</b>
<b>Product Description:</b>	<b>Make, model, and year of vehicle:</b>
<b>Product Work Order No.</b>	<b>Company your from/Company product purchased from:</b>

**Date of Fitment:** \_\_\_\_/\_\_\_\_/\_\_\_\_

Was the fitting hardware supplied complete?

Yes

No

If no what was not supplied

---

---

Did the installation go well?

Yes

No

Please provide comments

---

---

---

Please draw diagrams if you need to.

**Post to**  
Reply Paid 122  
PO Box 122  
Margate QLD 4019

**Fax to**  
(07) 3283 1168



WORLD'S BEST  
ALLOY BULLBARS

East Coast Bullbars (ECB Pty Ltd)

Tel: 07 3897 5700

Fax: 07 3283 1168

ecb@ecb.com.au www.ecb.com.au

29 Snook St  
Clontarf QLD 4019  
Australia

Po Box 122  
Margate QLD 4019  
Australia

## DESPATCH CHECKLIST BS80SY

Work Order #		<b>See other side of this page for photos of all mounts</b>
Finish:		
Transport:		
Due Date:		

### Do not fit air vents to Bar

- OC.....1 – Pair Steel mounting brackets.
- OC.....1 – ECB Steel tow bracket (8 cut into centre)
- OC.....2 – ECB Overrides – **Fitted to Bar**
- BK.....1 – Bolt Kit.
- BK.....1 – LED ECB indicator / park light kit.
- BK.....1 – Pair ECB Quick Click Harness (IC13SUXVINDH)
- BK.....1 – ECB fog light kit
- BK.....2 – Fog light surrounds
- BK.....1 – 2400mm length 6mm clip lock
- BK.....6 – 6mm Air Vents – **In bolt kit.**

\_\_\_\_\_/\_\_\_\_\_  
Wrapper's initials / Checker initials



Is this product “the best it can be” Yes  
If **NO** fix before continuing

All parts checked and completed by:

Nut and bolts: \_\_\_\_\_ Date \_\_/\_\_/\_\_

Order control: \_\_\_\_\_ Date \_\_/\_\_/\_\_



**WORLD'S BEST  
ALLOY BULLBARS**

**East Coast Bullbars (ECB Pty Ltd)**

Tel: 07 3897 5700

Fax: 07 3283 1168

ecb@ecb.com.au www.ecb.com.au

29 Snook St  
Clontarf QLD 4019  
Australia

Po Box 122  
Margate QLD 4019  
Australia

Final wrap check: \_\_\_\_\_ Date \_\_/\_\_/\_\_



\_\_\_\_\_/\_\_\_\_\_  
Wrapper's initials / Checker initials